



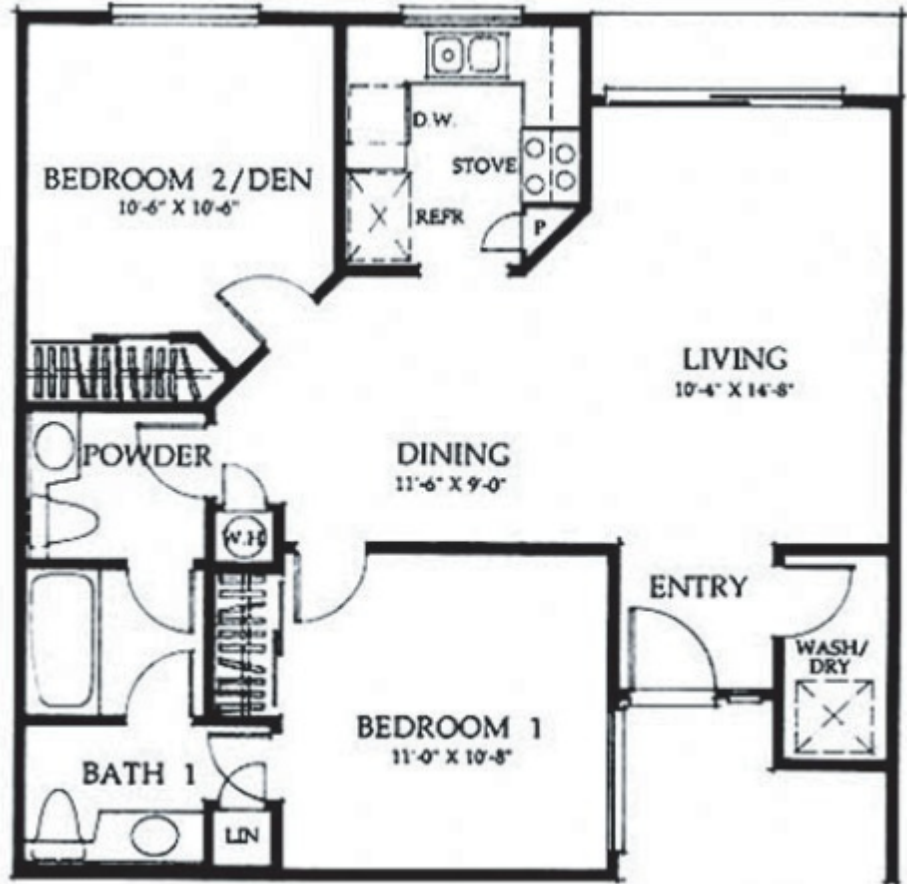
2900 E. Lincoln Ave.  
Anaheim, CA 92806  
(714)666-8840  
info@lemed-apartments.com

# Venice

2 bed      1.5 bath  
870sq ft      \$2945 - \$2995\*

## Features

- Single-Story (no one above or below)
- Cottage-Style
- Two Assigned Parking Spaces
- Private Yard
- Parking Adjacent to Your Apartment
- Stacked Washer/Dryer included in Separate Laundry Area
- Central A/C and Heating
- Granite Countertops
- Stainless Steel Appliances
- Ceramic Tile Floors
- Crown Molding
- Mirrored Closet Doors
- Dining Room Ceiling Fans
- Vaulted Ceilings\*
- Linen Closets
- Kitchen Pantry
- Dishwashers
- Wall to Wall Closets
- Gas Cooking and Heating
- Cable Ready
- Water and Trash are Paid



Fall in love with our Venice floorplan at Le Med! This 870 square foot design features two bedrooms and one-and-a-half bathrooms in a single-story, cottage-style home, with no one above or below you. Enjoy a world of convenience before you even enter the front door with our two, covered parking spaces directly adjacent to your new home. From there, you can take advantage of the many other amazing features of this must-see home including our central A/C, stacked washer and dryer in a separate space specifically designed for laundry day, and a private yard that will become your own slice of paradise. Stop by soon to explore your future home!