



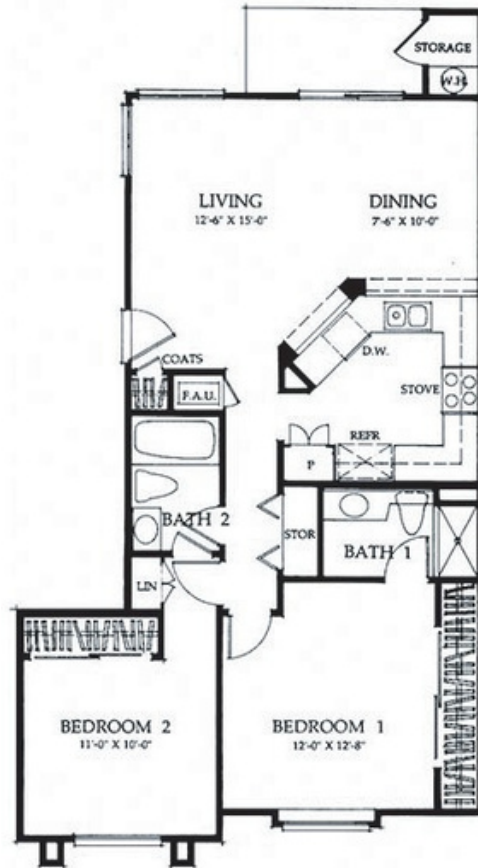
2900 E. Lincoln Ave.  
Anaheim, CA 92806  
(714)666-8840  
info@lemed-apartments.com

# Cannes

2 bed      2 bath  
912 sq ft      \$2795 – \$2870\*

## Features

- Washer/Dryer Hookups
- Two Bathrooms
- Extra Storage
- Private Patios and Balconies
- Central A/C and Heating
- Two Assigned Parking Spaces
- Granite Countertops
- Stainless Steel Appliances
- Ceramic Tile Floors
- Crown Molding
- Mirrored Closet Doors
- Large Kitchen with Pantry
- Breakfast Bars
- Dining Room Ceiling Fans
- Vaulted Ceilings\*
- Linen Closets
- Dishwashers
- Wall to Wall Closets
- Gas Cooking and Heating
- Cable Ready
- Water and Trash are Paid
- River Views\*



Cannes is our largest floorplan available at Le Med, measuring in at 912 square feet. This two-bedroom two-bathroom, design is crafted with you in mind, offering an abundance of luxury touches, convenience, and comfort for our residents. In each apartment, you will find a large kitchen with a pantry and breakfast bar, extra storage space, and a private patio or balcony. Be amazed by our designer coordinated accent colors and beautiful white-washed cabinets as well as our vaulted ceilings and crown molding. We are confident you will love this floorplan and the many amazing features and amenities that come included.

All pricing subject to change without notice \*in select units